

ProLine

Intro

Proline cabinets provide powerful, compact and professional cabling solution for limited U space requirements.

GENERAL CHARACTERISTICS

- 7U, 9U, 12U, 16U, 20U height options
- 80 kg load carrying capacity
- Front door can be opened up to 105°
- Standart colour options are RAL 9005 black and RAL 7035 grey
- U marking device installation uprights
- Additional rear mounting rails
- Extensive range of conventional accessories
- Casters or leveling feet for Stand-alone usage
- Nut and washer connection for earthing
- Lockable & removable smoked safety glass front door
- Lockable & removable side panels
- Removable rear panel





High Capacity, Rigid and Well Vented

19" wall-mounted cabinet
for Compact Professional
Networking duty.

GENERAL CHARACTERISTICS

- 450 mm., 560 mm. depth, double sectioned option(+160 mm.) is available for the depth of 450 mm. cabinet
- Rigid body structure due to tightly fixed uprights to the welded chassis sockets and 20-fold frame design
- Vented top cover for passive cooling and active cooling options
- Two 19" adjustable mounting angles in depth. (If needed 2 additional mounting angles could be ordered as accessory)
- Residential (D: 150mm, 300mm) versions: for residential LV infrastructure networking. Various cable entries on top and bottom
- Multiple cable entries; top, bottom and rear
- Cable protecting rubber edge sliding cover mechanism on top and bottom chassis
- Removable plastic cover on rear panel, replaceable with rubber edge sliding cover



ProLine

DIMENSIONS



PRODUCT REFERENCE	PRODUCT DEFINITION	U SIZE	WIDTH: OVERALL (MM)	DEPTH: OVERALL (MM)	HEIGHT: VERTICAL MOUNTING PROFILE (MM)	HEIGHT: OVERALL (MM)
PRL07U45_01M50	7U 600x450	7	600	450	397	402
PRL09U45_01M50	9U 600x450	9	600	450	485	491
PRL12U45_01M50	12U 600x450	12	600	450	618	624
PRL16U45_01M50	16U 600x450	16	600	450	798	802
PRL20U45_01M50	20U 600x450	20	600	450	976	980
PRL07U56_01M50	7U 600x560	7	600	560	397	402
PRL09U56_01M50	9U 600x560	9	600	560	485	491
PRL12U56_01M50	12U 600x560	12	600	560	618	624
PRL16U56_01M50	16U 600x560	16	600	560	798	802
PRL20U56_01M50	20U 600x560	20	600	560	976	980
PRD07U56_01M50	7U 600x(160+450)	7	600	610	397	402
PRD09U56_01M50	9U 600x(160+450)	9	600	610	495	491
PRD12U56_01M50	12U 600x(160+450)	12	600	610	618	624
PRD16U56_01M50	16U 600x(160+450)	16	600	610	798	802
PRD20U56_01M50	20U 600x(160+450)	20	600	610	976	980

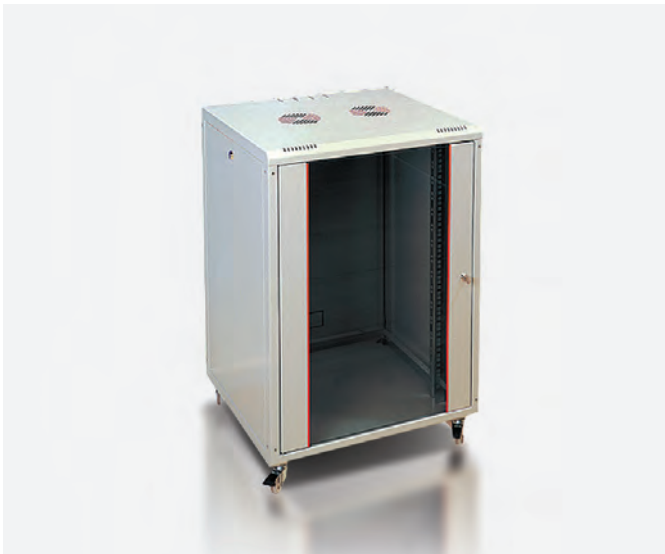
Note: Color code "M50" is RAL 9005 black, "M2" RAL 7035 light grey option is available.



DOUBLE SECTIONED VERSIONS

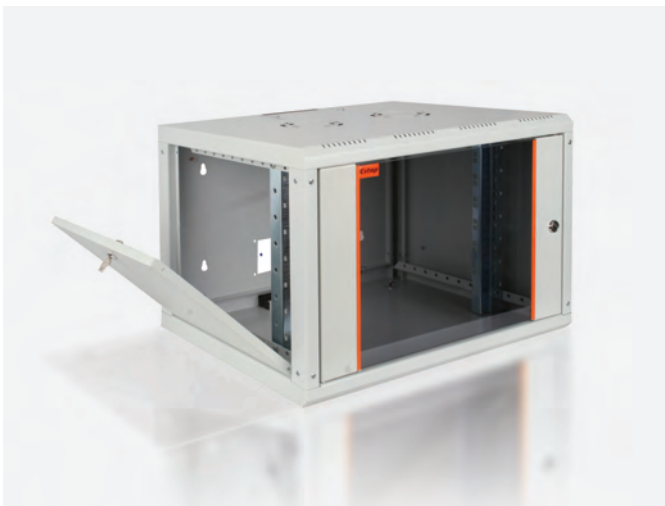
D: 160+450MM

ProLine series with a depth of 450 mm, it has a mono block wall frame option of D= 160 mm welding which allows double sectioned application. With increased depth, it offers rear access to the devices. Ease access of rear section allows for maintenance and installation from the backside, thanks to the heavy duty hinges and 105 degree opening angle.



STAND ALONE APPLICATION

All ProLine are suitable for stand-alone usage by adding caster group or leveling feet. It provides flexibility to use the cabinet under desks or in narrow places.



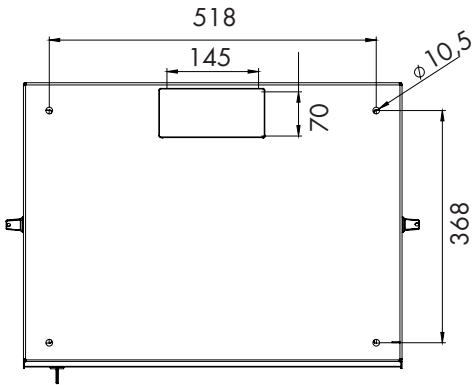
EASY TO MOUNT ON WALL

The back panel of all PROLINE cabinets can be easily removed and a person is sufficient for marking, drilling and wall mounting. The cabinet is then placed, which is mounted (suspended) to the rear panel.

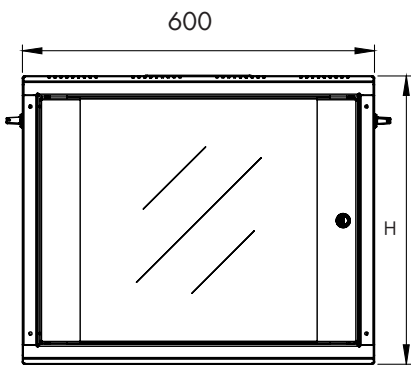
This structure reduces labor cost and provides great convenience for fixing. Without the cabinet mounted on the wall, the user can do all these work from his / her seat and finish. The cabinet is then easily hung on the wall / back panel.

ProLine

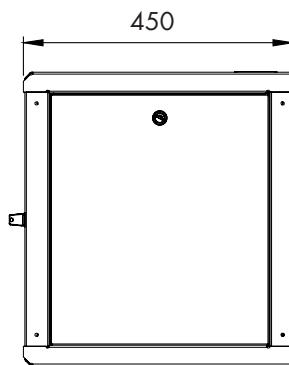
TECHNICAL DRAWINGS (mm) 600X450 MM - 07U/09U/12U/16U/20U



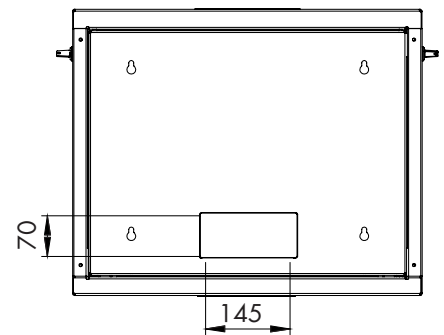
Bottom view



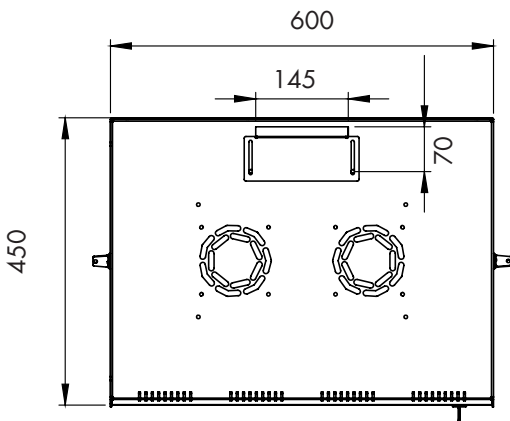
Front view



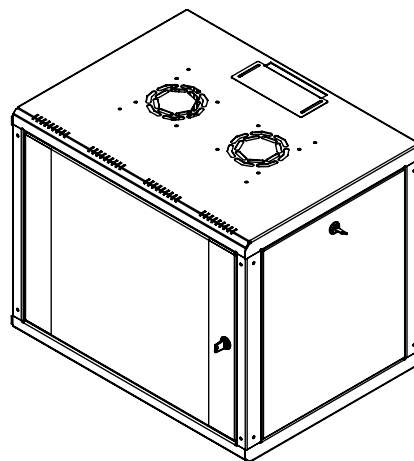
Side view



Back view



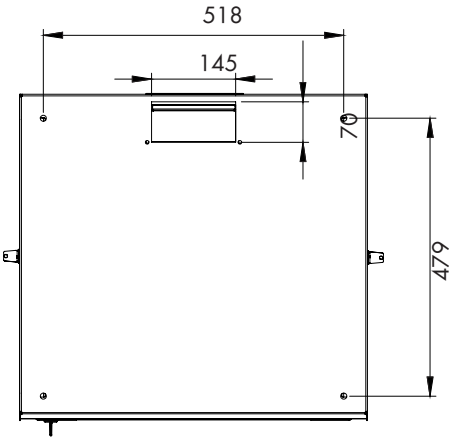
Top view



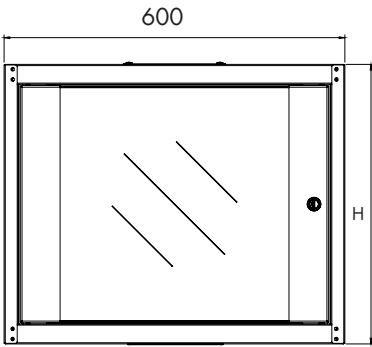
Iso view

H= Enclosure height

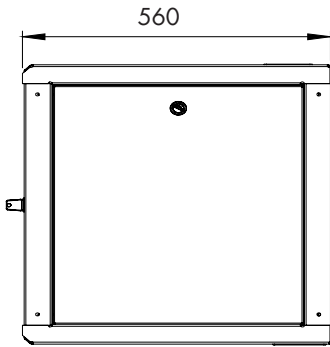
TECHNICAL DRAWINGS (mm)
600x560 mm - 7U/9U/12U/16U/20U



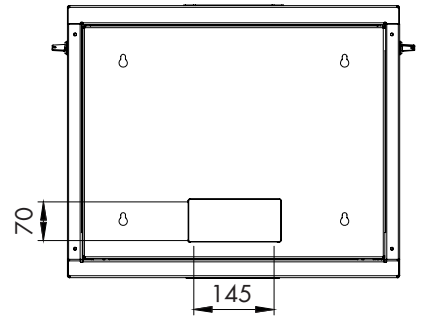
Bottom view



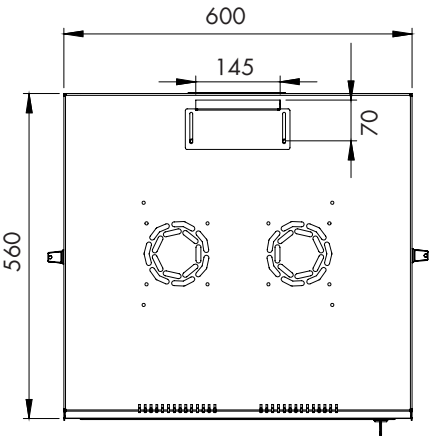
Front view



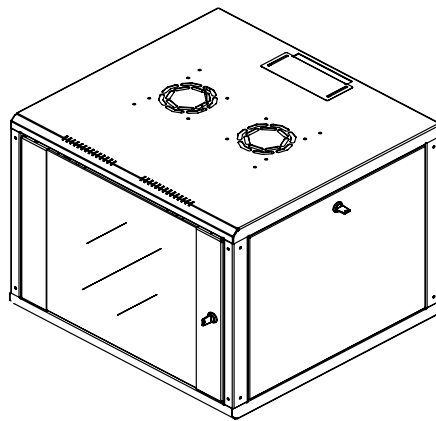
Side view



Back view



Top view



Iso view

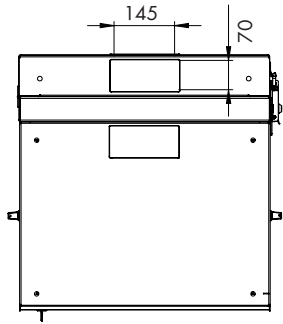
H= Enclosure height

H= Enclosure height

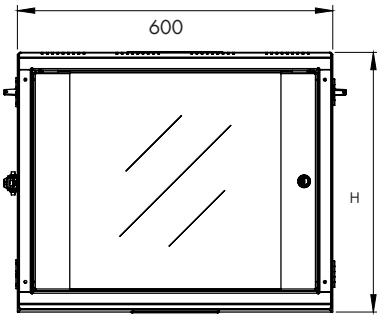
ProLine

DOUBLE SECTIONED WALL-MOUNTED CABINETS

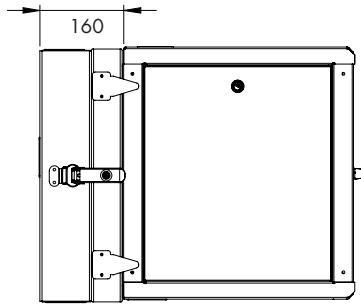
TECHNICAL DRAWINGS (mm) 600X450 MM - 600X(160+450) MM



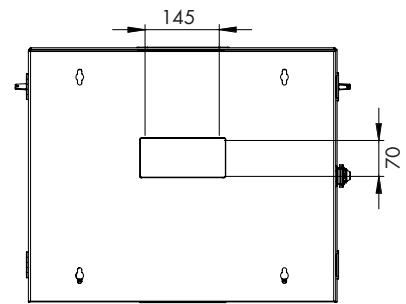
Bottom view



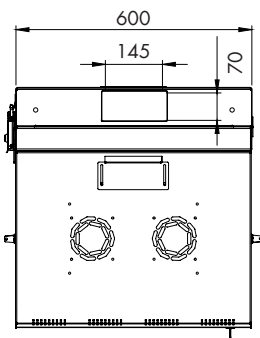
Front view



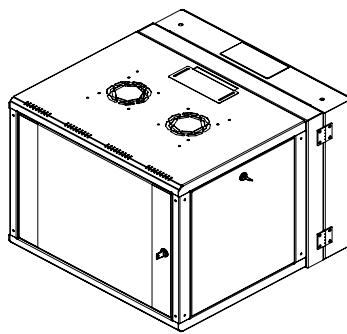
Side view



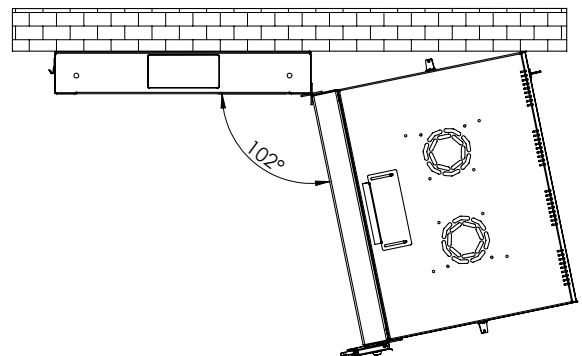
Back view



Top view



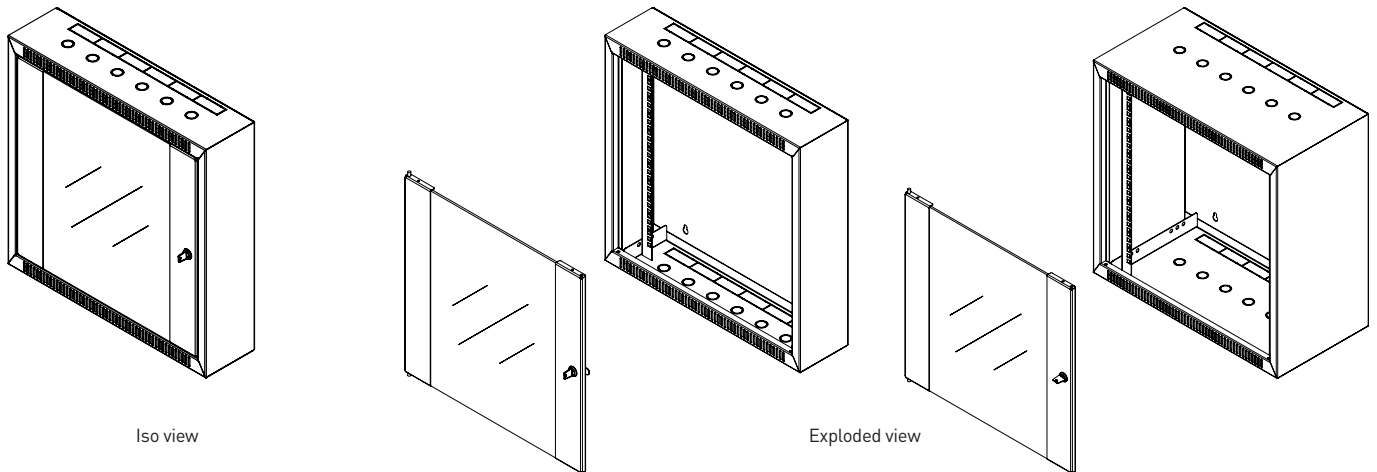
Iso view



H= Enclosure height

ProLine

RESIDENTIAL WALL-MOUNTED CABINETS



ProLine residential wall mounted cabinets 19" 600 x 150 mm

PRODUCT REFERENCE	PRODUCT DEFINITION	U SIZE	WIDTH:OVERALL (MM)	DEPTH: OVERALL (MM)	HEIGHT: VERTICAL MOUNTING PROFILE (MM)	HEIGHT: OVERALL (MM)
PRL06U615_01M50	6U 600x150	6	600	150	338	344
PRL09U615_01M50	9U 600x150	9	600	150	463	467
PRL12U615_01M50	12U 600x150	12	600	150	596	600

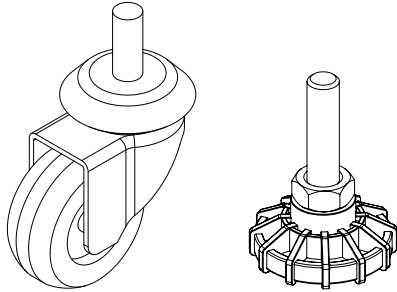
ProLine residential wall mounted cabinets 19" 600 x 300 mm

PRODUCT REFERENCE	PRODUCT DEFINITION	U SIZE	WIDTH:OVERALL (MM)	DEPTH: OVERALL (MM)	HEIGHT: VERTICAL MOUNTING PROFILE (MM)	HEIGHT: OVERALL (MM)
PRL06U630_01M50	6U 600x300	6	600	300	338	344
PRL09U630_01M50	9U 600x300	9	600	300	463	467
PRL12U630_01M50	12U 600x300	12	600	300	596	600

Note: Color code "M50" is RAL 9005 black, "M2" RAL 7035 light grey option is available.

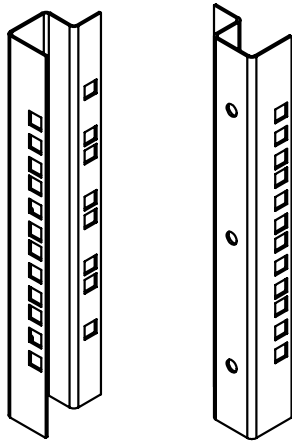
ProLine Accessories

CASTER AND LEVELLING FEET



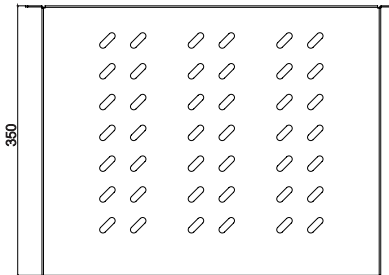
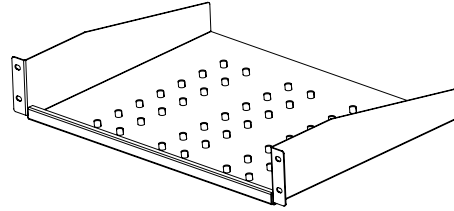
PRODUCT REFERENCE		600x450 mm	600x560 mm	600x450 mm +160 mm
M11PNY02	LEVELLING FEET	x	x	x
G22TKDUV	CASTERS	x	x	x

19" DEVICE UPRIGHTS



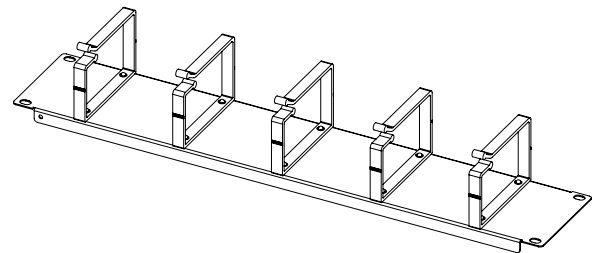
PRODUCT REFERENCE	"U" HEIGHT	600x450 mm	600x560 mm	600x450 mm +160 mm
CMD7UPROLINE	07	x	x	x
CMD9UPROLINE	09	x	x	x
CMD12UPROLINE	12	x	x	x
CMD16UPROLINE	16	x	x	x
CMD20UPROLINE	20	x	x	x

RACK MOUNT SHELF



PRODUCT REFERENCE	WxDxH (mm)	600x450 mm	600x560 mm	600x450 mm +160 mm
E44RAK20M50KFS	483x200x44	X	X	X
E44RAK25M50KFS	483x250x44	X	X	X
E44RAK30M50KFS	483x300x44	X	X	X
E44RAK35M50KFS	483x370x88	X	X	X
E44RAK40M50KFS	483x400x44		X	

HORIZONTAL CABLE MANAGER

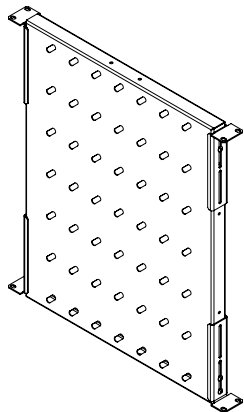


PRODUCT REFERENCE	WxDxH (mm)	600x450 mm	600x560 mm	600x450 mm +160 mm
E44ORG1U_M50	483x80x44	X	X	X
E44ORG2U_M50	483x80x88	X	X	X
E44ORG1UN_M50	483x80x44	X	X	X
E44ORG1F_M50	483x100x22	X	X	X
E44ORG2F_M50	483x124x44	X	X	X
E44ORG2F-BN_M50	483x10x44	X	X	X

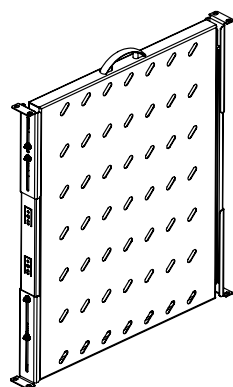
Note: Color code "M50" is RAL 9005 black, "M2" RAL 7035 light grey option is available.

ProLine Accessories

FIXED AND SLIDING SHELVES

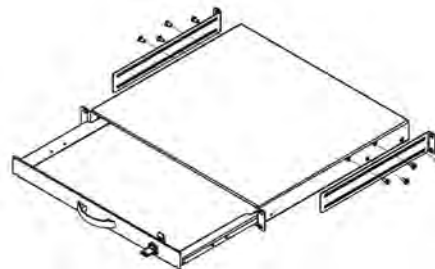


PRODUCT REFERENCE			Distance between uprights	
			Min. (A) (mm)	Max. (B) (mm)
SHLFIX60M50	D= 600 mm fixed shelf module with slots / load capacity 50 kg. / Ral...	Depth of the shelf D= 372 mm, 4-points fixed. only suitable for 600 mm depth cabinets. Load carrying capacity is 50 kg.	355	500



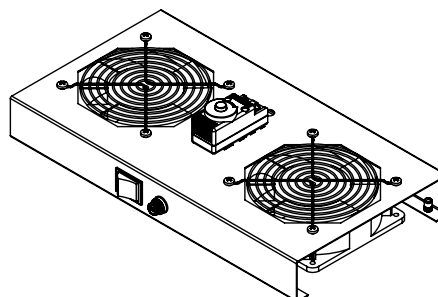
PRODUCT REFERENCE			Distance between uprights	
			Min. (A) (mm)	Max. (B) (mm)
SHLSLD60M50	D= 600 mm sliding shelf module with slots / load capacity 30 kg. / Ral...	Depth of the shelf D= 372 mm, 4-points fixed. only suitable for 600 mm depth cabinets. Load carrying capacity is 30 kg.	337	500

1U 19" KEYBOARD DRAWER



PRODUCT REFERENCE	DESCRIPTION	DIMENSIONS WxHxD (mm)
E44DRW1U_01M50	1U 19" Keyboard drawer (If cabinet is equipped with 4 pcs. 19" rails/ If needed please see 19" profiles angles) sheet steel material and load carrying capacity is 25 kg.	483x44x400

FAN

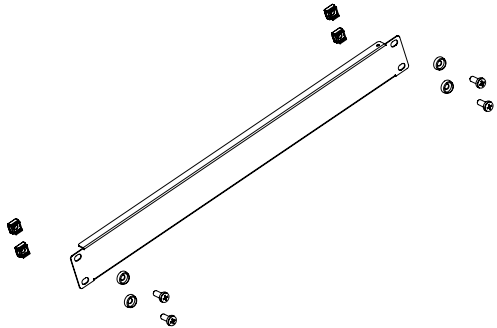


PRODUCT REFERENCE	WxDxH (mm)	600x450 mm	600x560 mm	600x450 mm +160 mm
M11HV1FW_01M50	360x191x44	X	X	X
M11HV2FW_01M50	360x191x44	X	X	X
M11HV1FWT_01M50	360x191x44	X	X	X
M11HV2FWT_01M50	360x191x44	X	X	X
M11HV1FWDT_01M50	360x191x83 (+ 1U 19")	X	X	X
M11HV2FWDT_01M50	360x191x83 (+ 1U 19")	X	X	X

Note: Color code "M50" is RAL 9005 black, "M2" RAL 7035 light grey option is available.

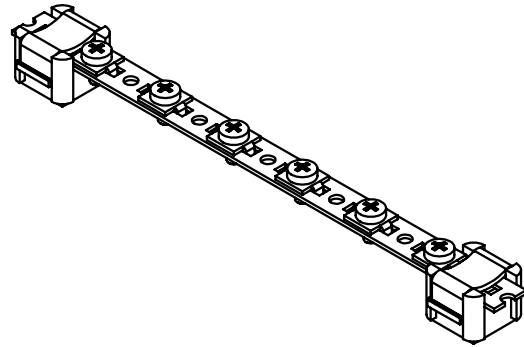
ProLine Accessories

BLANK PANEL



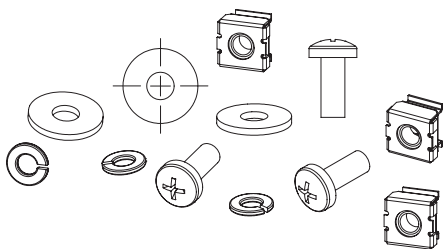
PRODUCT REFERENCE	DESCRIPTION	DIMENSIONS WxHxD (mm)
E44BPN01_0150M	1U 19" Blank panel	483x44x12
E44BPN02_0150M	2U 19" Blank panel	483x88x12
E44BPN03_0150M	3U 19" Blank panel	483x133x12
E44BPN04_0150M	4U 19" Blank panel	483x177x12
E44BPN05_0150M	5U 19" Blank panel	483x222x12
E44BPN06_0150M	6U 19" Blank panel	483x266x12
P44BPN06_01M50	6U 19" Modular plastic blank panel (ABS)	483x266x12

GROUNDING KIT



PRODUCT REFERENCE	DESCRIPTION
M44PEB01	Grounding kit, 6 each earthing leads + copper busbar
M44PEB19_01	Grounding kit, 13 each earthing leads + copper busbar

FIXINGS



PRODUCT REFERENCE	DESCRIPTION
KFS6X15_20	M6 caged nut, screw, washer (1set=20ea)
KFS6X15_50	M6 caged nut, screw, washer (1set=50ea)

LED LIGHT

PRODUCT REFERENCE	WxDxH (mm)	600x450 mm	600x560 mm	600x450 mm +160 mm
MAYDNLED-IRM	300x30x10	X	X	X

Note: Color code "M50" is RAL 9005 black, "M2" RAL 7035 light grey option is available.

ProLine

TECHNICAL CHARACTERISTICS

FRONT DOOR

Shatterproof glass with left and right metal frame

GLASS

4 mm thickness full-length smoked, shatterproof, tempered, secure

FRONT DOOR CONSTRUCTION

Single door opening with barrel type lock

FRONT DOOR LOCK

Barrel type, single point locking

ADHESIVE MATERIAL

High density polyurethane DIN 53479, DIN 53505

HINGE SYSTEM

Spring loaded

DOOR OPENING ANGLE AND SWAPPING

105 degree, possible to swap one side to the other

SIDE PANEL

Solid metal, 1,0 mm. Left and right (2 ea.)

CONSTRUCTION

Lockable, removable c/with barrel type lock

LOCK

Barrel type lock unit, single point

REAR PANEL

Solid metal 1,5 mm

Rear panel construction

Mechanically locked with 2 screws from inside

FRAMEWORK

TOP AND BOTTOM BASE UNITS

Solid metal 1,5 mm

CONSTRUCTIONS

Completely welded corner socket system

UPRIGHTS

Solid metal, 1,2 mm

CONSTRUCTION

Tightly fixed into top and bottom base units ,
5 times folded x 4 = 20 folds

INTERIOR PARTS

19" mounting angles

Solid metal, 1,5 mm

There are 2 pcs. 19" mounting angles in front.

Zinc plated, passivated, 8-12 micron

Adjustable in depth

ADDITIONAL TECHNICAL SPECIFICATIONS FOR DOUBLE SECTION WALL MOUNTING CABINETS

DOUBLE SECTION (WALL)

D=160 mm, monoblock, welded, construction

Connected to the front section with zamac hinges system

SWING OPENNING

105 degree

REAR SECTION LOCK

Traverse style , heavy duty

19" MOUNTING ANGLES

Solid metal, 1,5 mm

3 times folded as C profile system

2 ea. in front

Pre-configured as 19"

Zinc plated, passivated, 8-12 micron

Adjustable in depth

TESTS AND COMPLIED STANDARDS

TESTS AND COMPLIED STANDARDS

1) ISO 9001:2015 Quality Management System

2) ISO 14001:2015 Environmental Management System

3) ISO 27001:2013 Information Security Management System

4) ISO 45001:2018 Occupational Health and Safety Management System

5) 19" device mounting uprights IEC 297-1

6) EN 61587-1 Mechanical structures for electronic equipment.

7) All cabinet sizes complies with IEC 297-2.

**RESISTANCE TO ENVIRONMENTAL CONDITIONS AND CORROSION;
STABILITY, MECHANICAL SAFETY, RESISTANCE TO STATIC, DYNAMIC
AND MECHANICAL LOADS;**

**RESISTANCE TO VIBRATION, MECHANICAL SHOCK AND IMPACT;
DEGREES OF MECHANICAL PROTECTION PROVIDED BY THE
ENCLOSURE (IP20);**

ELECTRICAL GROUNDING CONTINUITY;

FIRE AND FLAME RESISTANCE;

Have been tested according to the standard " EN 61587-1" with the normative standards: IEC 60917, IEC 60297, IEC 60068-1, IEC 60068-2, IEC 60695-11-10, IEC 60950-1, contained and certified by the notified organizations::

TSE CERTIFICATE NO

003788-TSE-08/02

EAC CERTIFICATE NO

0443637, 0776963, 0345864, 0401678, 0776653

CORROSION

ISO 9227 Standard complied by the test report METALTEK AB-0547-T / 0157-1

TRANSPORT

ETS 300 019-1-2 Class 2.3 Comply with internal testing

STORAGE

ETS 300 019-1-1 Class 1.2 Comply with internal testing

SURFACE FINISH

Electrostatic powder coated c/with surface treatment , 80 +/- 5 micron paint thickness

PURCHASED PRODUCT CERTIFICATION

SHEET STEEL

EN 10346: 20015 DX51D+Z, EN 10130: 2006 DC01

ELECTROSTATIC POWDER COATING

ISO6860, ISO2409, ISO1520, ISO2815, ISO6272, ISO7253, ISO6270-1, ISO2812

ISO 9001, RoHS

GLASS

TS EN 12150-1, TS EN 1863-1

LOCK

IEC 62474, REACH, RoHS

CASTORS

ISO 9001, TS EN 12532, RoHS

FAN

IEC 60335-2-80:2002, IEC 60335-1:2010

ProLine

KEY FEATURES

ACCESSORIES

FAN SYSTEM; The setting range is between 0-35 °C with digital, analog or ON/OFF switch with 1 or 2 pieces fan controlled thermostat units. It is suitable for installation inside the cabinet with electric cable and internal wiring. Every fan at 50 Hz max. have a noise level of 38 dB and 53 CFM airflow. It has a CE certificate.

CASTER AND/OR LEVELING FEET; The wheels are movable in every direction and the front wheels have a lockable structure. The load carrying capacity of each wheel and each leveling feet is 250 kg.

FIXED AND SLIDING SHELF; Be able to mount from 4 points (2 in front and 2 in rear).

LIGHTING FIXTURE; 19", 1U, with ON/OFF switch, 220 Vac, automatic door with ON/OFF switch or LED with sensor.

GROUNDING CONTINUITY; Grounding continuity in the cabinet complies with IEC 61010-1 standard. For all doors, these grounding cable connections are made with bolts and nuts.

Grounding continuity between the 19" movable mounting profiles and the main body is provided with the toothed nuts and screws.

The Cabinet complies with EN 61587-1, IEC 60917, IEC 60297 standards, and are RoHS compliant, GOST and TSE certified.

Cabinets are manufactured at our factory which has ISO 9001

Quality Management System and ISO 14001: 2004 Environmental

Management System showing our commitment to the environment.

